



TRUCKWEIGH

ACCUWEIGH

Onboard and Vehicle Weighing Systems

For 12t to 50t GVM Vehicles

Axle Overload Protection System



TruckWeigh

TruckWeigh is specifically designed for all vehicles with mechanical and/or air spring suspension. Accuweigh Onboard has combined features of its axle transducer technology and proven 1155 digital indicator to provide a low cost overload protection and payload optimisation system. **TruckWeigh** is simple to install and offers cost effective overload protection for new and existing vehicles.

Features and Benefits

- Accuracy $\pm 3\%$ FSD (90 to 100%)
- Simple to Operate
- Easy to Fit to New and Existing Vehicles
- No Driver Input Required
- Axle and Gross Overload Protection
- 12 to 50 tonne GVW
- Rugged for Harsh Environments
- AxleWatch
- Trailer Identification
- Overload Alarm, Audible or Visual
- Balanced Load Distribution
- Maximise Payload Capacity
- Reduce Vehicle Wear and Tear and Fuel Consumption
- Protect your Licence
- Avoid Fines and Overload Endorsements



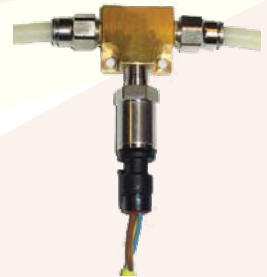
DIN RADIO MOUNT



DASH MOUNT



AXLE TRANSDUCER



AIR PRESSURE TRANSDUCER



SENSOR MOUNTED ON FRONT SPRING



SENSOR MOUNTED ON REAR SPRING



Axle Protection

TruckWeigh has no moving parts and is not susceptible to wear or slipping out of calibration because of stretched springs which are common in other axle protection systems. Combinations of Accuweigh Onboard's axle transducers and/or air pressure transducers obtain the loading condition of each axle or axle group.

TruckWeigh Digital Indicator

Specially engineered for on-board use, the **TruckWeigh** indicator is a versatile display designed to suit a variety of trucks from 12t to 50t GVW.

Its mounting flexibility ensures that it is suitable for both DIN radio mount and dash mount. The indicator provides overload protection for individual axles and for the complete vehicle.

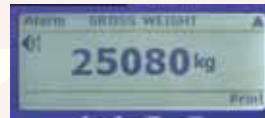
The indicator can connect to the 511 FreeWeigh, handheld remote display.

Trailer Identification

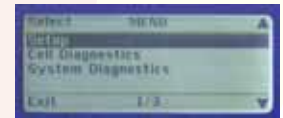
Where tractor and trailer combinations are swapped, **TruckWeigh** automatically recognises the overload protection system on the trailer, so there is no need to recalibrate every time the trailer is swapped.

Telematics Output

Connection to third party tracking systems is easily achieved via **TruckWeigh's** standard telematics output.



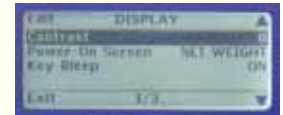
VEHICLE OVERLOAD



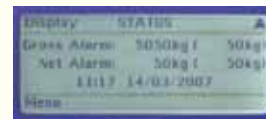
EASY TO SETUP MENUS



AXLE OVERLOAD



USER DEFINED DISPLAY



ALARM SETPOINTS

| FEATURES | Standard | Option |
|---------------------------------------|----------|--------|
| Gross Vehicle Overload | • | |
| AxleWatch: Individual Axle Overload | • | |
| Built in Alarm Sounder | • | |
| Trailer Swap - Trailer Identification | • | |
| CAN Bus | • | |
| RS232 Output | • | |
| Password Protection | • | |
| Telematics Output | • | |
| Printer - Thermal | | • |
| Printer - Heavy Duty | | • |
| Custom Printer Headers | | • |
| External Sounder | | • |
| 511 FreeWeigh Handheld Display | | • |

Accuweigh Pty Ltd

BROCHURE: AW417 | REVISION: H12.1

WESTERN AUSTRALIA (HEAD OFFICE):
PHONE: (08) 9259 5535

SOUTH AUSTRALIA OFFICE:
PHONE: (08) 8447 5011

NEW SOUTH WALES (SYDNEY) OFFICE:
PHONE: (02) 9728 4877



www.accuweigh.com.au

VICTORIA OFFICE:
PHONE: (03) 9548 5554

NEW SOUTH WALES (NEWCASTLE) OFFICE:
PHONE: (02) 4966 8900

QUEENSLAND OFFICE:
PHONE: (07) 3265 5520