



LoadMaster 9000i

ACCUWEIGH

Onboard and Vehicle
Weighing Systems

The Loadmaster 9000i is a trade
approvable, fully dynamic on-board
weighing system suitable for all types of
loaders.



DESCRIPTION

The RDS Loadmaster 9000i is an advanced weighing system for use on all types of loader. It offers the input of a target weight from which it indicates the remaining load required. It also has a last bucket tip-off function that allows the adjustment of the final bucket load to the exact amount required.

The Loadmaster 9000i also has two innovative enhancements that significantly reduce external influences on the weighing process such as vehicle bounce and changes in direction of travel, increasing the accuracy and consistency of the bucket and total load results.

The Loadmaster 9000i comes with an integrated SD card reader, allowing the logging of key data e.g. customer, load and summary totals.



by **RDS**

LOADMASTER 9000i

FEATURES

- Automatic, Lift Speed-Compensated, Dynamic Weighing
- Static Weighing Mode
- Live Last Bucket Tip-Off Facility
- Multiple Attachment or Product Calibration
- 1000 Store Internal Database for Products and Customers
- Integral SD Card Reader for Data Transfer to and from PC
- Overload Logging
- Net Weighing Function (for Containers/Pallets)
- Batch Weighing Capability - for Uploading Blends of Materials to Produce Accurate Mixes
- Large, Backlit Display Showing Target and Bucket Load, Customer Name, Material Handled and Time
- Display Screen Protected Behind Anti-Glare Acrylic Lens
- Proven Sensor Technology
- Enclosed in a Heavy-Duty ABS Case with Easy-Clean Finish
- Universal Double Ball-Jointed Mounting Bracket, Allows Adjustment to Virtually Any Angle

ADVANTAGES

- Trade Approvable in all EU Countries and Many Countries Worldwide
- Traceable Loads to OIML Standards R51 and R76, (Class III)
- Approved Mode Weighing Can be Easily Switched On or Off
- Provides an Operational and Management Record of Loading
- Ensures Trucks are Correctly Loaded First Time, Eliminating Return Trips from the Weighbridge and Therefore Also Increasing Site Safety
- Weighing "On the Lift" Speeds Operation, Enabling Operators to Load More Vehicles per Shift
- Easy Upgrade from Existing Systems

ENHANCEMENTS

Telemetry for fast and efficient load data transfer between loader and office.

Printer option for hard copy prints in the cab.

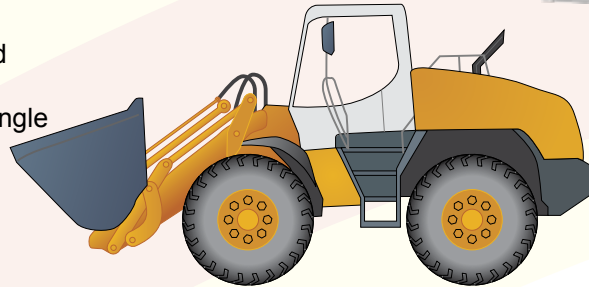
DMM for approvable on-board weighing with enhanced data management and bespoke record keeping capabilities.

Scanner Module for easy recognition of operational categories with a bar code reader.

ALSO IN THE RANGE



Loadmaster 8000iX: dual-sensor non-approved system with target weight entry, last bucket tip-off, data management and a printer option.



TECHNICAL DATA

Approvals	OIML R51, OIML R76, ISO TR 10605, ISO 11452, EN ISO 14982	System Accuracy	According to OIML R51, OIML R76
Display	160 x 128 Pixel (95mm x 75mm) Dot Matrix - LED Backlit	Load Sensor Rating	0-250 Bar
Switches	Rubber Membrane - Sealed, Tactile Operation	Environmental Protection	Instrument Unit IP-34 External Sensors IP-65 Full RFI/EMI Protection
Operating Voltage	11 - 30VDC	Enclosure	ABS Outer Casing
Temperature Range	-40°C to +85°C Storage, -20°C to +70°C Operating	Dimensions	155mm(H) x 220mm(W) x 65mm(D)
		Weight	0.75kg

Accuweigh Pty Ltd

BROCHURE: AW393 | REVISION: H12.1

WESTERN AUSTRALIA (HEAD OFFICE):
PHONE: (08) 9259 5535

SOUTH AUSTRALIA OFFICE:
PHONE: (08) 8447 5011

NEW SOUTH WALES (SYDNEY) OFFICE:
PHONE: (02) 9728 4877



www.accuweigh.com.au

VICTORIA OFFICE:
PHONE: (03) 9548 5554

NEW SOUTH WALES (NEWCASTLE) OFFICE:
PHONE: (02) 4966 8900

QUEENSLAND OFFICE:
PHONE: (07) 3265 5520